

# Modular Casing Bowl Superbowl™



# SUPERBOWL™

## The Superbowl is an innovative, simple design with a significant advantage

The Superbowl+ is a modular casing bowl with replaceable top flange and flow line side ports. Having these components replaceable allows you to extend the life of your bowl without having to cut off and replace if it gets damaged, saving time and money. Some of the reasons a standard casing bowl is cut off and replaced include:

- Hold down pins are not backed out prior to pulling the hanger which causes damage.
- Damage to the hanger profile.
- Alternate hanger profiles required.
- Damaged side port threads
- Side ports are washed out
- Alternate connection is required

The Superbowl also offers other creative cost savings solutions. Both the top flange and the tubing rotator are built to the same height allowing them to be interchanged on the well keeping flowline heights the same. A new well completion that doesn't immediately require a rotator can be run with the standard top flange and flow tee. If time shows tubing wear and a tubing rotator is required, the top flange can be replaced with a tubing rotator top flange making your casing bowl multi-functional while remaining the same height.

Another advantage of the Superbowl is when the well is abandoned, the casing head components can be removed and replaced with an end of life cap. The old components can be inspected, repaired, and re-used in other setups to help reduce future spending costs.

## Features:

- Removable top flange can be reused on next well, or pulled for repair
- Able to connect tubing rotator directly to casing head without changing flow line heights
- Easily replace washed out side ports without replacing entire bowl
- Mix and Match: Use a 7-1/16" Flange on 8 5/8" casing for increased cost savings
- Easy to change flanges which eliminates the need for adapter spools
- Walk-away plug or end of life cap for after abandonment workover
- Change the pressure rating by installing a different flange (ex. 7" 2K to a 7" 3K)
- NACE MR0175 compliant

\*Rotator sizes can be fit into head as per customer request.  
† Precision Machining & Mfg. Patent Pending

SIZE*	GRADE	DRIFT (IN)	HEAD DIAMETER (IN)	INTERCHANGABLE SIDE PORT	HEAD FLANGE SIZES	ROTATOR*	ACTUAL BORE
4-1/2"	PL1	4.090	12.000	2"LP, R23	7" 2000#, 3000#, 5000#	7-1/16"	6-1/2"
	PL2			2"LP, R23	9" 2000#, 3000#, 5000#		
	PL3			2"LP, R23	11" 2000#, 3000#, 5000#		
7"	PL1	6.460	12.000	2"LP, R23	7" 2000#, 3000#, 5000#	9"	8-1/4"
	PL2			2"LP, R23	9" 2000#, 3000#, 5000#		
	PL3			2"LP, R23	11" 2000#, 3000#, 5000#		
8-5/8"	PL1	7.725	14.000	2"LP, R23	7" 2000#, 3000#, 5000#	11"	10-1/4"
	PL2			2"LP, R23	9" 2000#, 3000#, 5000#		
	PL3			2"LP, R23	11" 2000#, 3000#, 5000#		

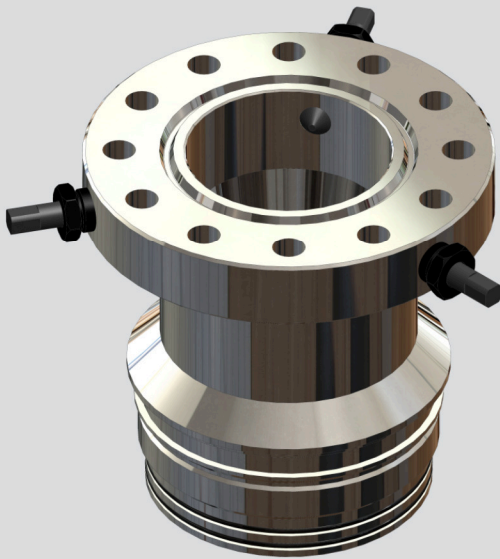
Phone: 1-780-812-9094 | Website: [www.precision-machining.ca](http://www.precision-machining.ca) | E-mail: [admin@precision-machining.ca](mailto:admin@precision-machining.ca)

4, 61219 Range Rd 461 | P.O. Box 7893, Bonnyville, AB T9N 2J2

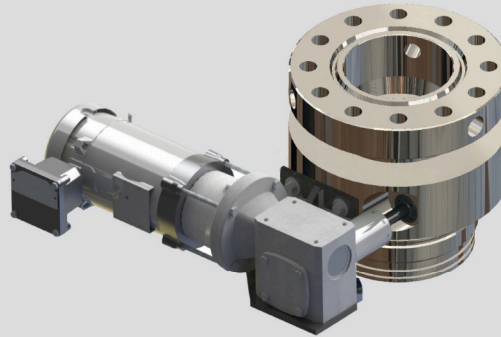
# Modular Casing Bowl Superbowl™



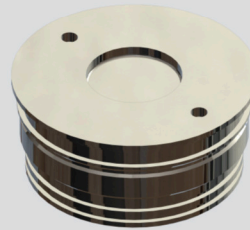
CASING HEAD



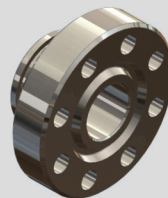
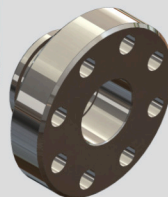
CASING HEAD – TUBING ROTATOR



END OF LIFE CAP



LINE PIPE SIDE OUTLET



CASING BOWL

FLANGED SIDE OUTLET

**SUPERBOWL™**